

Wednesday, June 26, 2024
Time of Issue: 0800 hours IST
(MORNING)

All India Impact Based Weather Warning Bulletin

26 June (Day 1):

- ❖ **Heavy to very heavy rainfall** very likely at isolated places over Andaman & Nicobar Islands, Sub-Himalayan West Bengal & Sikkim, Bihar, Arunachal Pradesh, Konkan & Goa, Tamil Nadu, Puducherry & Karaikal, Kerala & Mahe, Coastal Karnataka and South Interior Karnataka; **heavy rainfall** at isolated places over Uttarakhand, East Uttar Pradesh, East Madhya Pradesh, Chhattisgarh, Jharkhand, Odisha, Nagaland, Manipur, Mizoram & Tripura, Assam & Meghalaya, Madhya Maharashtra, Gujarat state and Coastal Andhra Pradesh & Yanam.
- ❖ **Thunderstorm accompanied with lightning, gusty winds (speed reaching 40-50 kmph)** very likely at isolated places over East Uttar Pradesh, Bihar and Jharkhand; **with lightning & gusty winds (speed reaching 30-40 kmph)** at isolated places Himachal Pradesh, Uttarakhand, Rajasthan, Madhya Pradesh, Vidarbha, Chhattisgarh, Odisha, West Bengal & Sikkim; **with lightning** at isolated places over Gujarat state.
- ❖ **Heat wave conditions** very likely in isolated pockets over Jammu division, Punjab and West Rajasthan.
- ❖ **Squally weather with wind speed 35 kmph to 45 kmph gusting to 55 kmph** very likely to prevail over Southeast and adjoining Southwest Arabian Sea, Eastcentral Arabian sea and adjoining areas, Lakshadweep area, adjoining Maldives area, along and off south Gujarat, Maharashtra, Konkan, Goa, Karnataka, Kerala coasts, over Gulf of Mannar, off Sri Lanka coast, South and Central Bay of Bengal, north Andaman Sea. **squally weather with wind speed 45 kmph to 55 kmph gusting to 65 kmph** to prevail over along and off Somalia coast, south and central Arabian sea, along and off Yemen and Oman coasts. Fishermen are advised not to venture into these areas.

27 June (Day 2):

- ❖ **Heavy to very heavy rainfall** very likely at isolated places over Arunachal Pradesh, Assam & Meghalaya, Konkan & Goa, Kerala & Mahe, Coastal Karnataka, South Interior Karnataka; **heavy rainfall** at isolated places over Uttarakhand, Uttar Pradesh, East Rajasthan, Madhya Pradesh, Vidarbha, Chhattisgarh, Sub-Himalayan West Bengal & Sikkim, Bihar, Odisha, Nagaland, Manipur, Mizoram & Tripura, Madhya Maharashtra, Gujarat state, Tamil Nadu, Puducherry & Karaikal, Coastal Andhra Pradesh & Yanam, Telangana and North Interior Karnataka.
- ❖ **Thunderstorm accompanied with lightning, gusty winds (speed reaching 40-50 kmph)** very likely at isolated places over Haryana-Chandigarh-Delhi, Uttar Pradesh, Bihar, Jharkhand; **with lightning & gusty winds (speed reaching 30-40 kmph)** at isolated places Uttarakhand, Madhya Pradesh, Vidarbha, Chhattisgarh, Rajasthan; **with lightning** at isolated places over Gujarat state.
- ❖ **Heat wave conditions** very likely in isolated pockets over Jammu division.
- ❖ **Squally weather with wind speed 35 kmph to 45 kmph gusting to 55 kmph** very likely to prevail over Lakshadweep area, adjoining Southeast Arabian Sea, along and off Maharashtra, Konkan, goa, Karnataka, Kerala coasts, over Gulf of Mannar, off Sri Lanka coast, off north Andhra Pradesh and south Odisha coasts, South and Central Bay of Bengal. **squally weather with wind speed 45 kmph to 55 kmph gusting to 65 kmph** to prevail over along and off Somalia coast, South and Central Arabian Sea, along and off Yemen and Oman coasts. Fishermen are advised not to venture into these areas.

28 June (Day 3):

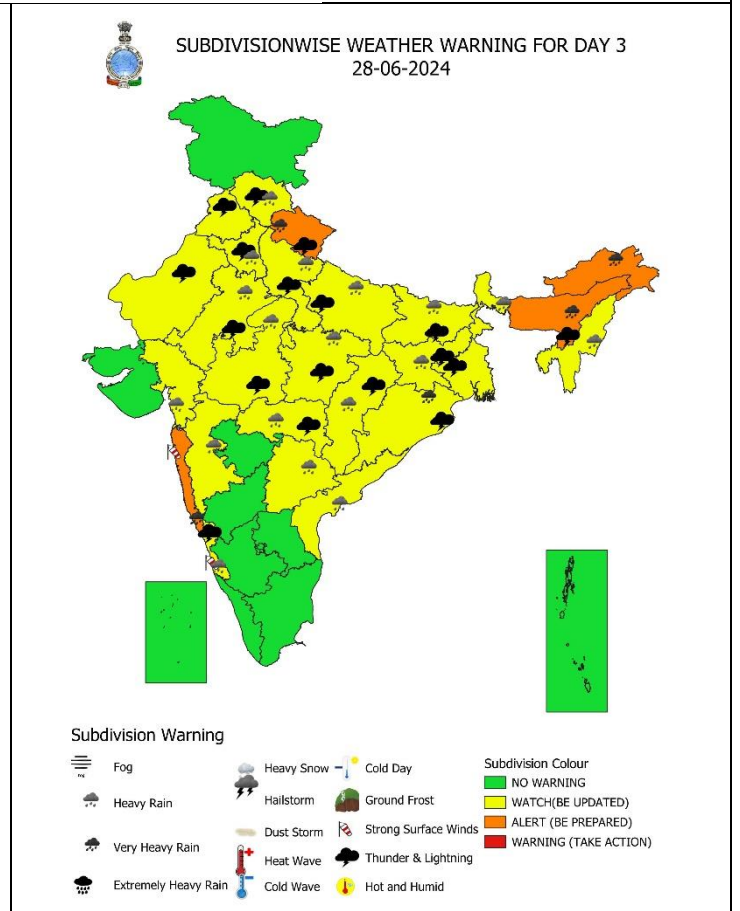
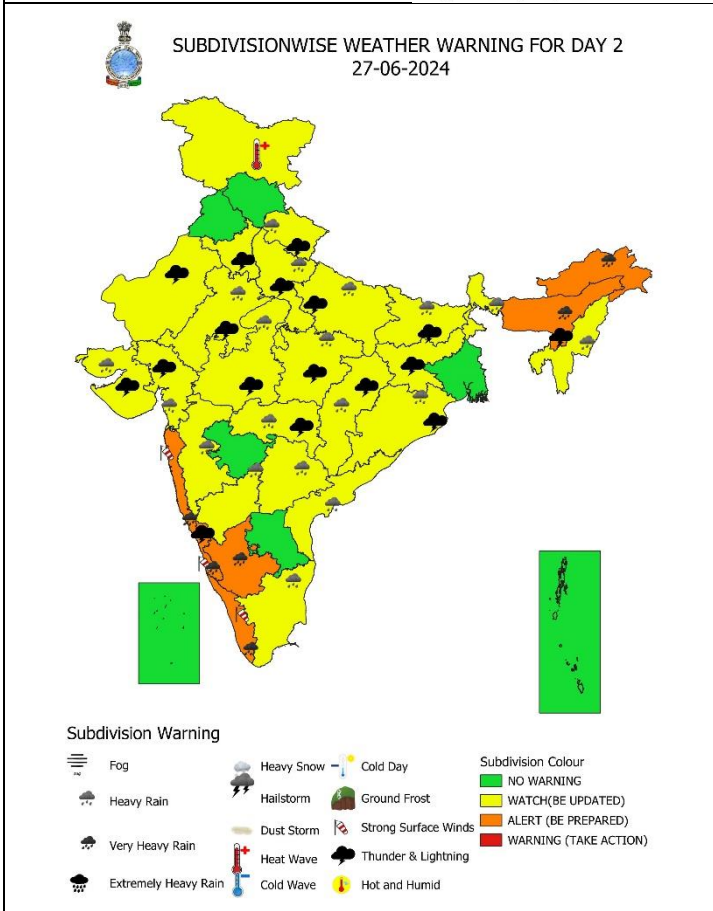
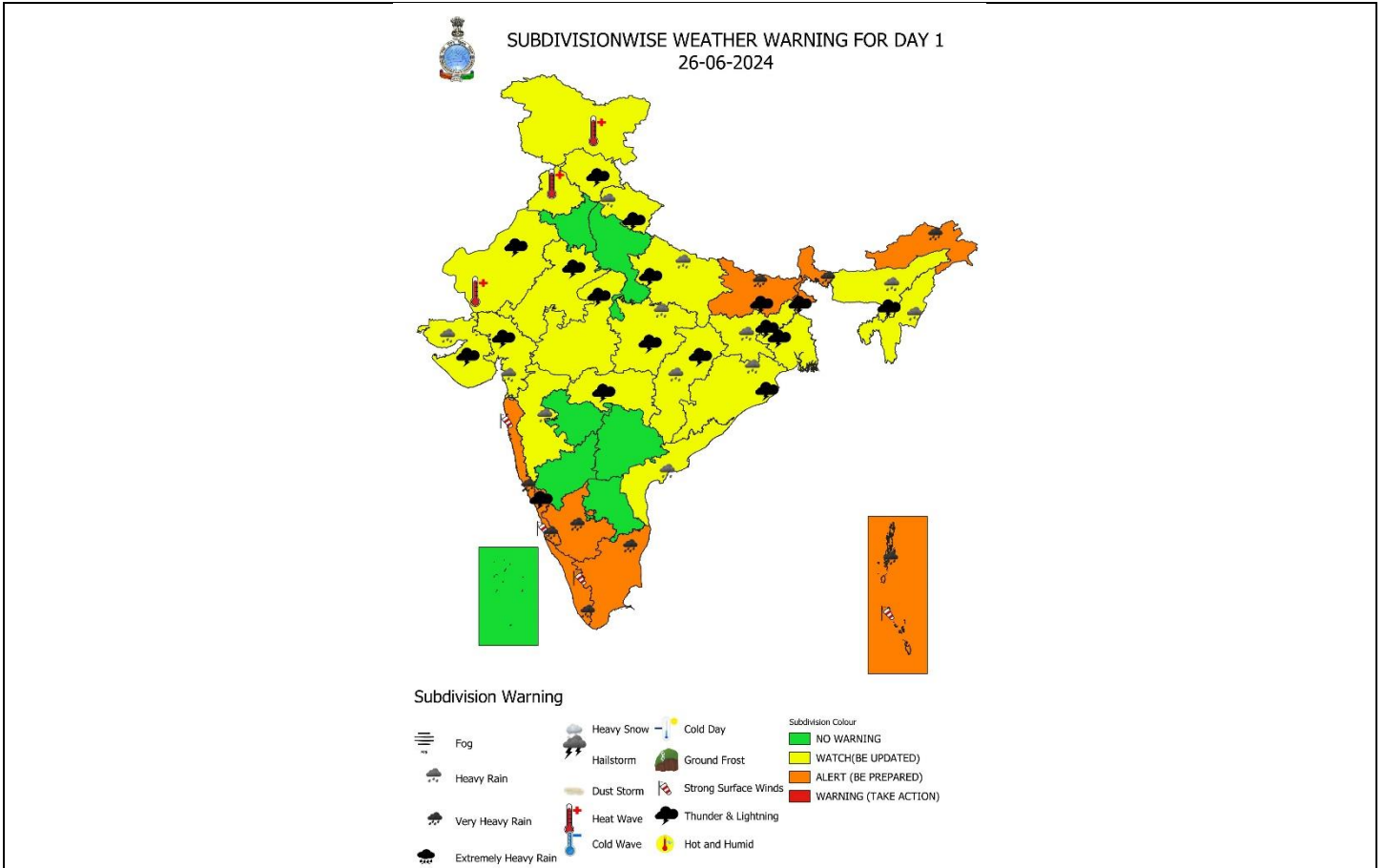
- ❖ **Heavy to very heavy rainfall** likely at isolated places over Uttarakhand, Odisha, Arunachal Pradesh, Assam & Meghalaya, Konkan & Goa; **heavy rainfall** at isolated places over Himachal Pradesh, Haryana, Uttar Pradesh, East Rajasthan, Madhya Pradesh, Vidarbha, Chhattisgarh, Sub-Himalayan West Bengal & Sikkim, Bihar, Jharkhand, Nagaland, Manipur, Mizoram & Tripura, Madhya Maharashtra, Gujarat Region, Coastal Karnataka, Coastal Andhra Pradesh & Yanam and Telangana.
- ❖ **Thunderstorm accompanied with lightning, gusty winds (speed reaching 40-50 kmph)** likely at isolated places over Himachal Pradesh, Uttarakhand, Punjab, Haryana-Chandigarh-Delhi, Uttar Pradesh; **with lightning & gusty winds (speed reaching 30-40 kmph)** at isolated places Rajasthan, Madhya Pradesh, Vidarbha, Chhattisgarh, Gangetic West Bengal, Bihar and Jharkhand.
- ❖ **Squally weather with wind speed 35 kmph to 45 kmph gusting to 55 kmph** likely to prevail over northern parts of southeast Arabian sea, along and off south Maharashtra, Konkan, goa, Karnataka coasts, off Sri Lanka coast, over Gulf of Mannar, south and central Bay of Bengal & adjoining north Bay of Bengal. **squally weather with wind speed 45 kmph to 55 kmph gusting to 65 kmph** to prevail over along and off Somalia coast, South and Central Arabian Sea, along and off Yemen and Oman coasts. Fishermen are advised not to venture into these areas.

29 June (Day 4):

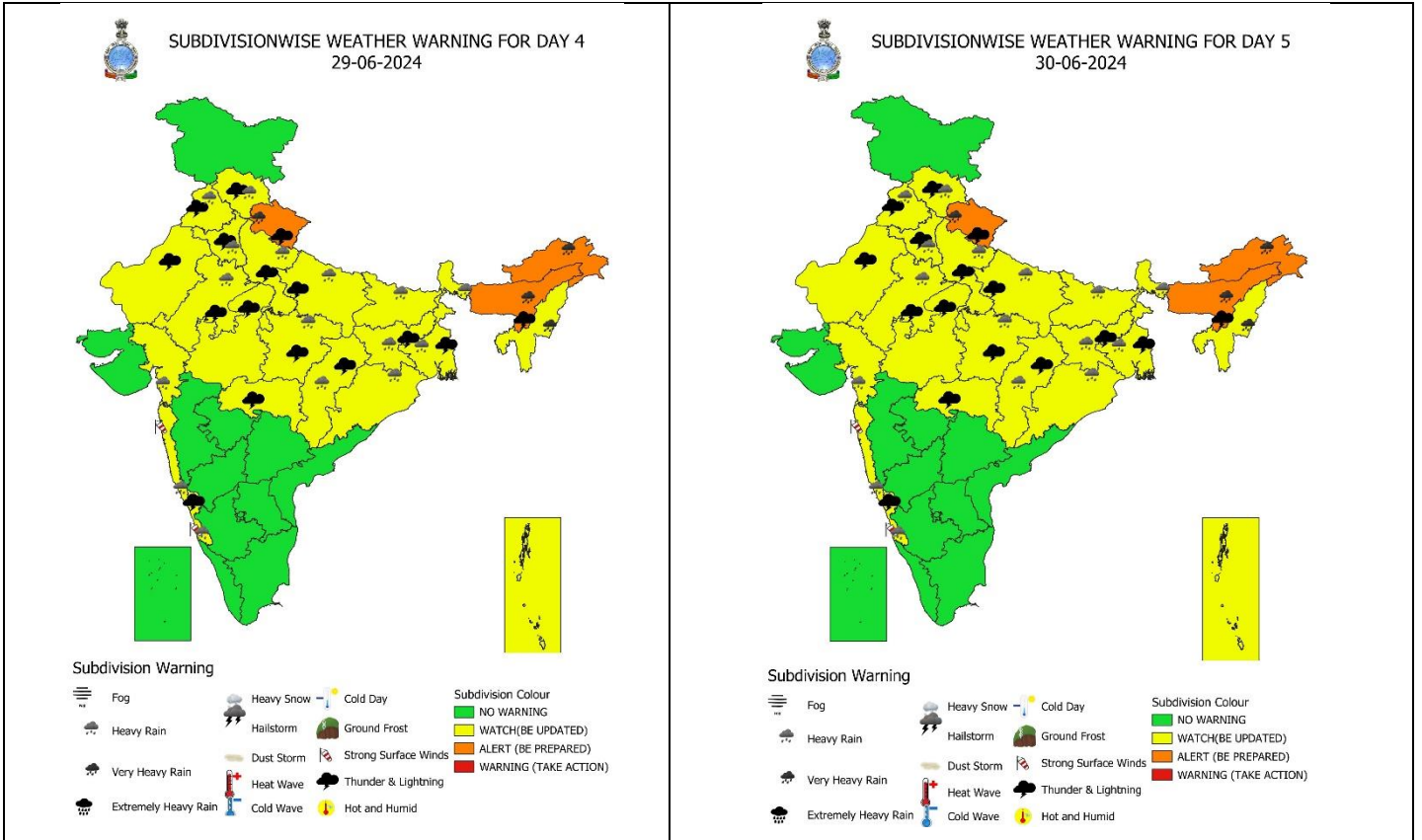
- ❖ **Heavy to very heavy rainfall** at isolated places over Uttarakhand, Arunachal Pradesh, Assam & Meghalaya and Nagaland, Manipur, Mizoram & Tripura; **heavy rainfall** at isolated places over Himachal Pradesh, Punjab, Haryana, Uttar Pradesh, East Rajasthan, East Madhya Pradesh, Chhattisgarh, West Bengal & Sikkim, Bihar, Jharkhand, Odisha, Konkan & Goa, Gujarat Region and Coastal Karnataka.
- ❖ **Thunderstorm accompanied with lightning, gusty winds (speed reaching 40-50 kmph)** likely at isolated places over Himachal Pradesh, Uttarakhand, Punjab, Haryana-Chandigarh-Delhi, Uttar Pradesh, Gangetic West Bengal; **with lightning & gusty winds (speed reaching 30-40 kmph)** at isolated places Rajasthan, Madhya Pradesh, Vidarbha, Chhattisgarh and Jharkhand.
- ❖ **Squally weather with wind speed 35 kmph to 45 kmph gusting to 55 kmph** likely to prevail over northern parts of Southeast Arabian Sea, off Maharashtra, Konkan, goa, Karnataka coasts, over Gulf of Mannar, off Sri Lanka coast, South and Central Bay of Bengal, southern parts of North Bay of Bengal. **squally weather with wind speed 45 kmph to 55 kmph gusting to 65 kmph** to prevail over along and off Somalia coast, South and Central Arabian Sea, along and off Yemen and Oman coasts. Fishermen are advised not to venture into these areas.

30 June (Day 5):

- ❖ **Heavy to very heavy rainfall** at isolated places over Uttarakhand, Arunachal Pradesh, Assam & Meghalaya and Nagaland, Manipur, Mizoram & Tripura; **heavy rainfall** at isolated places over Himachal Pradesh, Punjab, Haryana, Uttar Pradesh, East Rajasthan, East Madhya Pradesh, Chhattisgarh, West Bengal & Sikkim, Bihar, Jharkhand, Odisha, Konkan & Goa, Gujarat Region and Coastal Karnataka.
- ❖ **Thunderstorm accompanied with lightning, gusty winds (speed reaching 40-50 kmph)** likely at isolated places over Himachal Pradesh, Uttarakhand, Punjab, Haryana-Chandigarh-Delhi, Uttar Pradesh, Gangetic West Bengal; **with lightning & gusty winds (speed reaching 30-40 kmph)** at isolated places Rajasthan, Madhya Pradesh, Vidarbha, Chhattisgarh and Jharkhand.
- ❖ **Squally weather with wind speed 35 kmph to 45 kmph gusting to 55 kmph** likely to prevail over northern parts of Southeast Arabian Sea, off Maharashtra, Konkan, goa, Karnataka coasts, over Gulf of Mannar, off Sri Lanka coast, South and Central Bay of Bengal, southern parts of North Bay of Bengal. **squally weather with wind speed 45 kmph to 55 kmph gusting to 65 kmph** to prevail over along and off Somalia coast, South and Central Arabian Sea, along and off Yemen and Oman coasts. Fishermen are advised not to venture into these areas.



*** Red colour warning does not mean "Red Alert", Red colour warning means "Take Action".**
 Forecast and Warning for any day is valid from 0830 hours IST of day till 0830 hours IST of next day.
 For more details, kindly visit <https://mausam.imd.gov.in> or contact: 011-2434-4599
 (Service to the Nation since 1875)



IMPACT & ACTION SUGGESTED due to very heavy/extremely heavy rainfall over Andaman & Nicobar Islands, Sub-Himalayan West Bengal & Sikkim, Bihar, Tamil Nadu, Puducherry & Karaikal on 26th; Coastal & South Interior Karnataka, Kerala & Mahe on 26th & 27th; Konkan & Goa, ghat areas of Madhya Maharashtra and Arunachal Pradesh during next 5 days.

Impact Expected

- Localized Flooding of roads, water logging in low lying areas and closure of underpasses mainly in urban areas of the above region.
- Occasional reduction in visibility due to heavy rainfall.
- Disruption of traffic in major cities due to water logging in roads leading to increased travel time.
- Minor damage to kutcha roads.
- Possibilities of damage to vulnerable structure.
- Localized Landslides/Mudslides/landslips/mud slips/landsinks/mudsinks.
- Damage to horticulture and standing crops in some areas due to inundation.
- It may lead to riverine flooding in some river catchments (for riverine flooding please visit Web page of CWC)

Action Suggested

- Check for traffic congestion on your route before leaving for your destination.
- Follow any traffic advisories that are issued in this regard.
- Avoid going to areas that face the water logging problems often.
- Avoid staying in vulnerable structure.

Agromet advisories for Heavy Rainfall, Gusty winds and Heat Wave likely over various parts of the country:

- Make provision for draining out excess water from crop fields to avoid water stagnation in Arunachal Pradesh, Assam & Meghalaya, Andaman & Nicobar Islands, Sub Himalayan West Bengal & Sikkim, Uttarakhand, Madhya Pradesh, Vidarbha, Konkan & Goa, Madhya Maharashtra, Gujarat State, Tamil Nadu, Kerala, Coastal and South Interior Karnataka and Coastal Andhra Pradesh.
- Apply light and frequent irrigation to standing crops to avoid heat stress; provide mulching to conserve soil moisture and minimise evaporation in Jammu, Punjab and West Rajasthan.
- Provide mechanical support to horticultural crops & staking to vegetables.

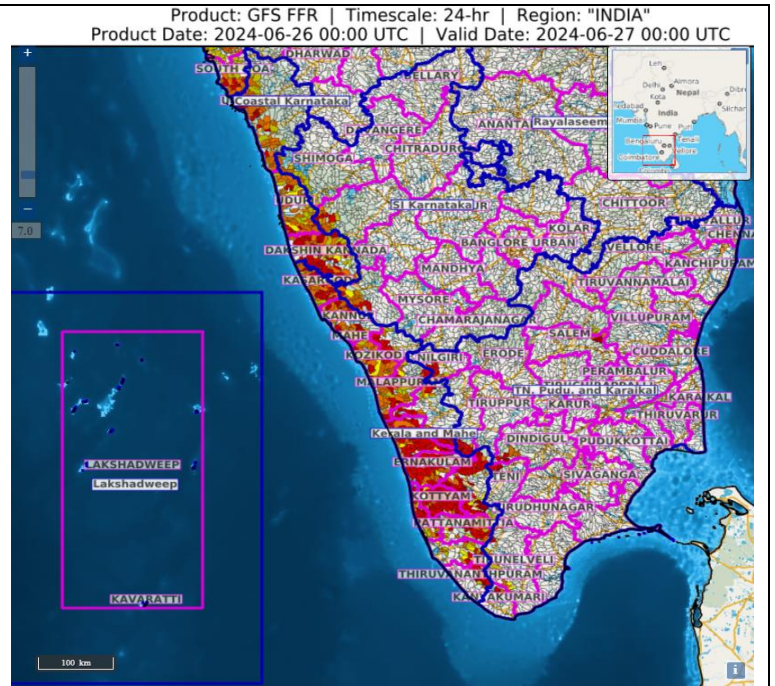
*** Red colour warning does not mean "Red Alert", Red colour warning means "Take Action".**
 Forecast and Warning for any day is valid from 0830 hours IST of day till 0830 hours IST of next day.
 For more details, kindly visit <https://mausam.imd.gov.in> or contact: 011-2434-4599
 (Service to the Nation since 1875)

FLASH FLOOD GUIDANCE:

24 hours Outlook for the Flash Flood Risk (FFR) till 0530 IST of 27-06-2024 :

Low to Moderate flash flood risk **likely over few watersheds & neighbourhoods of Kerala & Mahe and adjoining south Coastal Karnataka Met Sub-divisions during next 24 hours.**

Surface runoff/ Inundation may occur at some fully saturated soils & low-lying areas over AoC as shown in map due to expected rainfall occurrence in next 24 hours.



LEGENDS

WARNING

WARNING (TAKE ACTION)
ALERT (BE PREPARED)
WATCH (BE UPDATED)
NO WARNING (NO ACTION)

Probabilistic Forecast

Terms	Probability of Occurrence (%)
Unlikely	< 25
Likely	25 - 50
Very Likely	50 - 75
Most Likely	> 75



Rain/ Snow *
 Heavy: 64.5 to 115.5 mm/cm *
 Very Heavy: 115.6 to 204.4 mm/cm*
 Extremely Heavy: > 204.4 mm/cm *



Heat Wave
 When maximum temperature of a station reaches $\geq 40^{\circ}\text{C}$ for plains and $\geq 30^{\circ}\text{C}$ for hilly regions
(a) Based on Departure from normal

Heat Wave: Maximum Temperature Departure from normal 4.5°C to 6.4°C .
 Severe Heat Wave: Maximum Temperature Departure from normal $\geq 6.5^{\circ}\text{C}$

(b). Based on Actual maximum temperature

Heat Wave: When actual maximum temperature $\geq 45^{\circ}\text{C}$.
 Severe Heat Wave: When actual maximum temperature $\geq 47^{\circ}\text{C}$

(c). Criteria for heat wave for coastal stations

When maximum temperature departure is $> 4.5^{\circ}\text{C}$ from normal. Heat Wave may be described provided maximum temperature $\geq 37^{\circ}\text{C}$



Warm Night
 When maximum temperature remains 40°C

Warm Night: When minimum temperature departure 4.5°C to 6.4°C .
 Severe Warm Night: When minimum temperature departure $> 6.4^{\circ}\text{C}$.



Cold Wave
 When minimum temperature of a station $\leq 10^{\circ}\text{C}$ for plains and $\leq 0^{\circ}\text{C}$ for hilly regions.

(a). Based on departure

Cold Wave: Minimum Temperature Departure from normal -4.5°C to -6.4°C .
 Severe Cold Wave: Minimum Temperature Departure from normal $\leq -6.5^{\circ}\text{C}$

(b) Based on actual Minimum Temperature (for Plains only)

Cold Wave : When Minimum Temperature is $\leq 4.0^{\circ}\text{C}$
 Severe Cold Wave: When Minimum Temperature is $\leq 2.0^{\circ}\text{C}$

(c) For Coastal Stations

When Minimum Temperature departure is $\leq -4.5^{\circ}\text{C}$ & actual Minimum Temperature is $\leq 15^{\circ}\text{C}$



Cold Day
 When minimum temperature of a station $\leq 10^{\circ}\text{C}$ for plains and $\leq 0^{\circ}\text{C}$ for hilly regions

Based on departure

Cold Day: Maximum Temperature Departure from normal -4.5°C to -6.4°C .
 Severe Cold Day: Maximum Temperature Departure from normal $\leq -6.5^{\circ}\text{C}$



Fog
 Phenomenon of small droplets suspended in air and the horizontal visibility $< 1\text{km}$

Moderate Fog: When the visibility between 500-200 metres
 Dense Fog: when the visibility between 50- 200 metres
 Very Dense Fog: when the visibility < 50 metres



Thunderstorm
 Sudden electrical discharges manifested by a flash of light (Lightning) and a sharp rumbling sound (thunder)



Dust/Sand Storm
 An ensemble of particles of dust or sand energetically lifted to great heights by a strong and turbulent wind.



Frost
 Ice deposits on ground

Air temperature $\leq 4^{\circ}\text{C}$ (over Plains)



Squall
 A strong wind that rises suddenly, lasts for atleast 1 minute.

Moderate: Wind speed 52-61 kmph
 Severe: Wind speed 62-87 kmph
 Very Severe: Wind speed > 87 kmph



Sea State
 Effect of various waves in the sea over specific area

Rough to very rough: Wind speed 41-62 kmph (22-33 knots) & Wave height 2.5-6 metre
 High to very high: Wind speed 63-117 kmph (34-63 knots) & Wave height 6-14 metre
 Phenomenal: Wind speed > 117 kmph (> 63 knots) & Wave height > 14 metre



Cyclone
 Cyclonic Storm: Wind speed 62-87 kmph (34-47 knots)

Severe Cyclonic Storm: Wind speed 88-117 kmph (48-63 knots)
 Very Severe Cyclonic Storm: Wind speed 118-165 kmph (64 - 89 knots)
 Extremely Severe Cyclonic Storm: Wind speed 166-220 kmph (90 -119 knots)
 Super Cyclone Storm: Wind speed > 220 kmph (> 119 knots)

Kindly download MAUSAM APP for location specific forecast & warning, MEGHDOOT APP for Agromet advisory and DAMINI APP for Lightning Warning & visit state MC/RMC websites for district wise warning.

* Red colour warning does not mean "Red Alert", Red colour warning means "Take Action".
 Forecast and Warning for any day is valid from 0830 hours IST of day till 0830 hours IST of next day.
 For more details, kindly visit <https://mausam.imd.gov.in> or contact: 011-2434-4599
 (Service to the Nation since 1875)